



# GAT MONTHLY MEMBERSHIP PROGRESS REPORT

Results as of: 6/30/2023

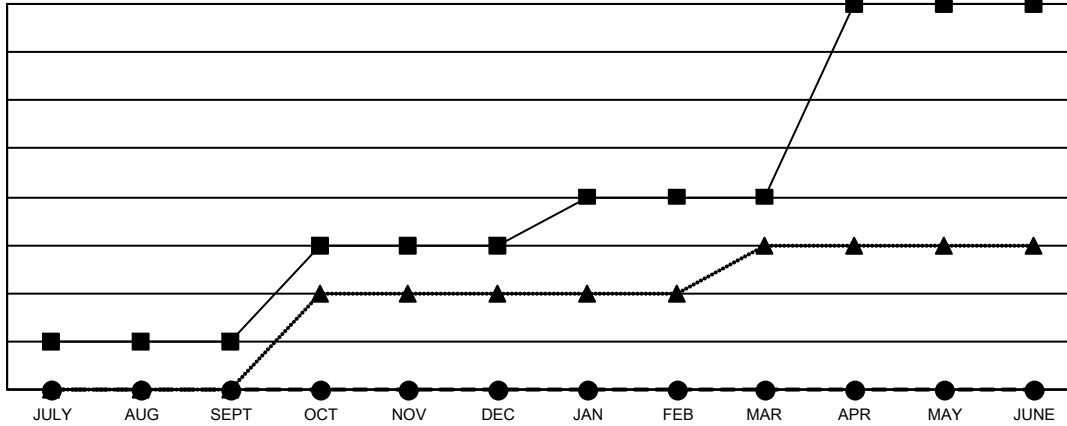
Multiple District N

LOCATION: CANADA

Clubs			
RESULTS FOR 2022-2023			
QUARTER	NEW CLUB GOAL	NEW CLUBS	DROPPED CLUBS
JULY/AUG/SEPT	1	0	2
OCT/NOV/DEC	2	0	0
JAN/FEB/MAR	1	0	0
APR/MAY/JUNE	4	0	4

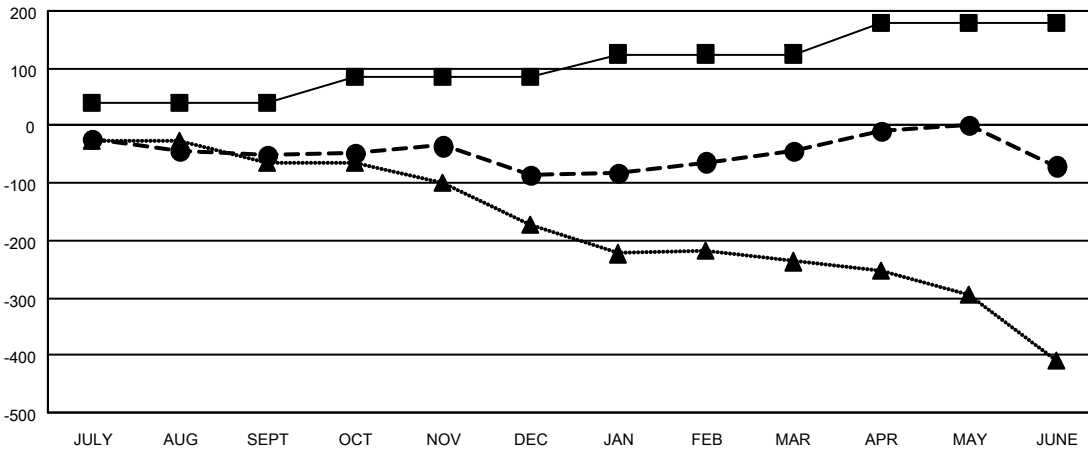
Members			
RESULTS FOR 2022-2023			
QUARTER	MEMBER GROWTH NET GOAL	MEMBER GROWTH ACTUAL	DROPPED MEMBERS ACTUAL (including transfers)
JULY/AUG/SEPT	40	63	99
OCT/NOV/DEC	45	159	182
JAN/FEB/MAR	40	234	177
APR/MAY/JUNE	55	197	208

GOALS AND ACTUAL NEW CLUBS CUMULATIVE



- CURRENT YEAR GOALS FOR NEW CLUBS
- CURRENT YEAR ACTUAL NEW CLUBS
- ▲- LAST YEAR ACTUAL NEW CLUBS

GOALS AND ACTUAL MEMBERS CUMULATIVE



- MEMBER GROWTH NET GOAL
- MEMBER GROWTH ACTUAL
- ▲- LAST YEAR MEMBERSHIP ACTUAL

<b>DROPPED CLUBS: 6</b>	
<b>DROPPED MEMBERS</b>	
DECEASED	102
CLUB CANCELLED	10
OTHER	554
<b>TOTAL</b>	<b>666</b>

155 CLUBS OF 242 ADDED 1 OR MORE NEW MEMBERS

[CLICK HERE FOR CUMULATIVE MEMBERSHIP DATA](#)

GENDER DISTRIBUTION	
MALE	3,185 (60.61%)
FEMALE	2,069 (39.37%)
NON BINARY	0 (0.00%)
PREFER NOT TO ANSWER	1 (0.02%)
<b>TOTAL FAMILY UNIT MEMBERS</b>	<b>1,076</b>
<b>FAMILY MEMBERS PAYING HALF DUES</b>	<b>552</b>